

HERMETIC Pad Printing Machine



PAD PRINTING MACHINES ACCESSORIES SERVICE

Standard pad printing machine with an electromechanical drive
Highest ease of use
Compact design, ideal for integration into automations

Standard Pad Printing Machines

HERMETIC Series

The universal **HERMETIC** series offers a multitude of application possibilities due to its various features. In particular, the electromechanical drive with its very quiet running has predestined the **HERMETIC** series for integration into automated systems.

The ink residue pick-up system (option) can be integrated into the machine housing, allowing the machine to be used in confined spaces.

Exclusive to TAMPOPRINT is the adjustable pad stroke onto the workpiece in combination with an electromechanical machine drive.

The variable contact pressure of the ink/doctoring cup offers optimised service lifetimes for the printing clichés used and the best results for doctoring.

In addition to all the above advantages, the **HERMETIC 150** offers a max. print image size of \varnothing 140 mm. An (optional) ink residue pick-up system can be fitted either on the right or left of the machine.



HERMETIC 6-12 universal



HERMETIC 9-12 universal



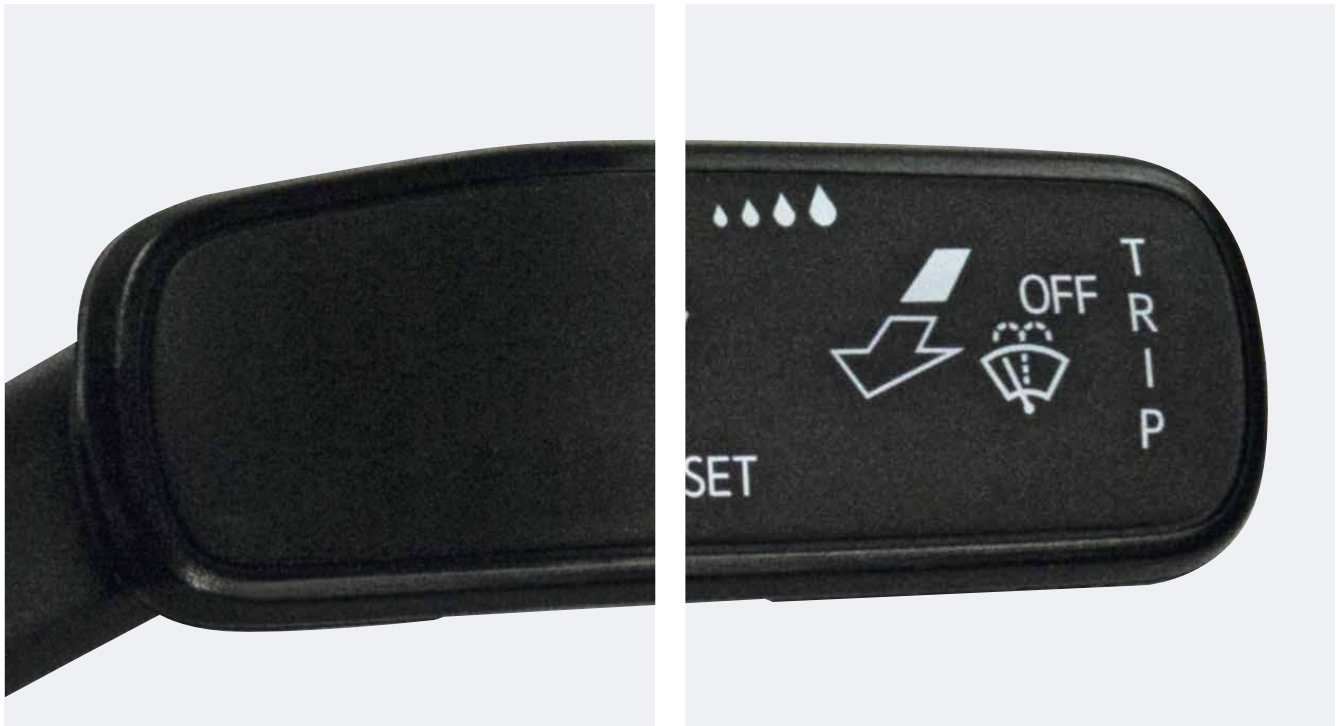
HERMETIC 13-12 universal



HERMETIC 150

HERMETIC Series

Focus on versatility



With pad printing,
it is switchable

Technology

HERMETIC Series

HERMETIC		HERMETIC 6-12 universal	HERMETIC 9-12 universal	HERMETIC 13-12 universal	HERMETIC 150
Table model / Built-in execution	Item No.	01 00 46	01 06 00	01 06 01	01 00 41 ¹⁾ / 01 00 42 ²⁾
Ink residue pick-up system		optional	optional	optional	optional
Single cycle		yes	yes	yes	yes
Multiple printing		yes	yes	yes	yes
Continuous run		yes	yes	yes	yes
Piece counter		yes	yes	yes	yes
Variable speed control		yes	yes	yes	yes
Cycles/hour	max.	1300–4100	1100–3600	1000–2700	750–2100
Ink cup/doctoring cup	Ø mm	60	90	130	150
Variable doctoring contact pressure		yes	yes	yes	no
Cliché size	mm	70 x 140	100 x 215	150 x 300	160 x 350
Print image size max.	Ø mm	55	85	125	140
Variable pad stroke onto workpiece	mm	80–110	110–150	120–160	160–190
Pad stroke onto cliché	mm	32	40	45	50
Pad installation height max.	mm	76	92	110	136
Force of pressure	N	300	1100	1800	2500
Drive		electromechanical	electromechanical	electromechanical	electromechanical
Connected load	kW	0,5	1,0	1,0	1,0
Power supply	V/phase	230V/1/N/PE	230V/1/N/PE	230V/1/N/PE	230V/1/N/PE
Interface		D-SUB 37 pole	D-SUB 37 pole	D-SUB 37 pole	D-SUB 37 pole
Power frequency	Hz	50–60	50–60	50–60	50–60
Control		PLC	PLC	PLC	PLC
Control voltage	V/DC	24	24	24	24
Prefuse	A	16	16	16	16
Pneumatic supply fine filter 5 µm	bar	–	–	–	–
Air consumption/cycle	NL	–	–	–	–
Width	mm	323	360	393	410 ¹⁾ /490 ²⁾
Depth	mm	81 ¹⁾	1000	1175	1066 ¹⁾ /1073 ²⁾
Height	mm	750	870	1076	895 ¹⁾ /1770 ²⁾
Weight	approx. kg	70	155	266	390 ¹⁾ /510 ²⁾

1) = Built-in execution 2) = Floor standing model

Standard Pad Printing Machines

HERMETIC Series

Practical plastic housing,
perfectly designed, easy
accessibility



HERMETIC 6-12 universal
with a machine base frame
(optional)



Machines from the **HERMETIC -SERIES**
integrated in the semi-automatic machine
MODULE ONE M



Scope of supplies

- Toolkit
- Paper cups
- Spray bottle
- Assembly table
- Gripping tongs
- Ink/doctoring cup
- Thrust collar
- Pad coupling
- Printing pad
- Foot switch
- Documentation

Accessories & Options

- Machine base frame
 - x/y cross support, chassis with x/y cross support
 - Ink residue pick-up system (machine prepared for installation)
 - Multicolor thrust collars
 - Rotary index tables T2/T4/150 T2/150 T4
 - Thrust collar adapter Ø 90 auf 60 mm
 - Thinner-metering system „hermetic“
 - Can be integrated into MODULE ONE series
 - Standard or special version
 - Without chassis, with separated operator panel
 - Housing made of stainless steel

TAMPOPRINT® AG
Lingwiesenstraße 1
70825 Korntal-Münchingen
GERMANY

Tel. +49 7150 928-0
Fax +49 7150 928-400

info@tampoprint.de
www.tampoprint.de

TAMPOPRINT® IBERIA S.A.U.
Polígono Industrial Martorelles
C/ Sant Martí, s/n (entre Gorgs y Mogent)
08107 Martorelles (Barcelona), SPAIN

Tel. +34 93 2327161
Fax +34 93 2471500

tampoprint@tampoprint.es
www.tampoprint.es

TAMPOPRINT® INTERNATIONAL CORP.
1400 26th Street, Vero Beach
FL 32960
USA

Tel.+1 772 778-8896, 800 810-8896
Fax +1 772 778-8289

sales@tampoprint.com
www.tampoprint.com



Technical Data
tampo.link/hermetic

The reproduction of trademarks and brands used in this brochure, even if not explicitly expressed, does not justify the assumption that such names or symbols may be considered as free as defined by the Trademark Act and may therefore freely be used. The rights are the property of the respective owner. TAMPOPRINT products are permanently updated to keep pace with the latest technological developments. For this reason, figures and descriptions are non-binding. Our machines are manufactured based on the currently valid European Machinery Directives as well as the European product standards EN 1010 - 1 and EN 1010 - 2.

Copyright © 2019 TAMPOPRINT AG. Subject to technical changes and other modifications.

All locations are certified ISO 9001:2015

04/2019